

VOLKSWAGEN

Amarok RWD 2010-current Generation II



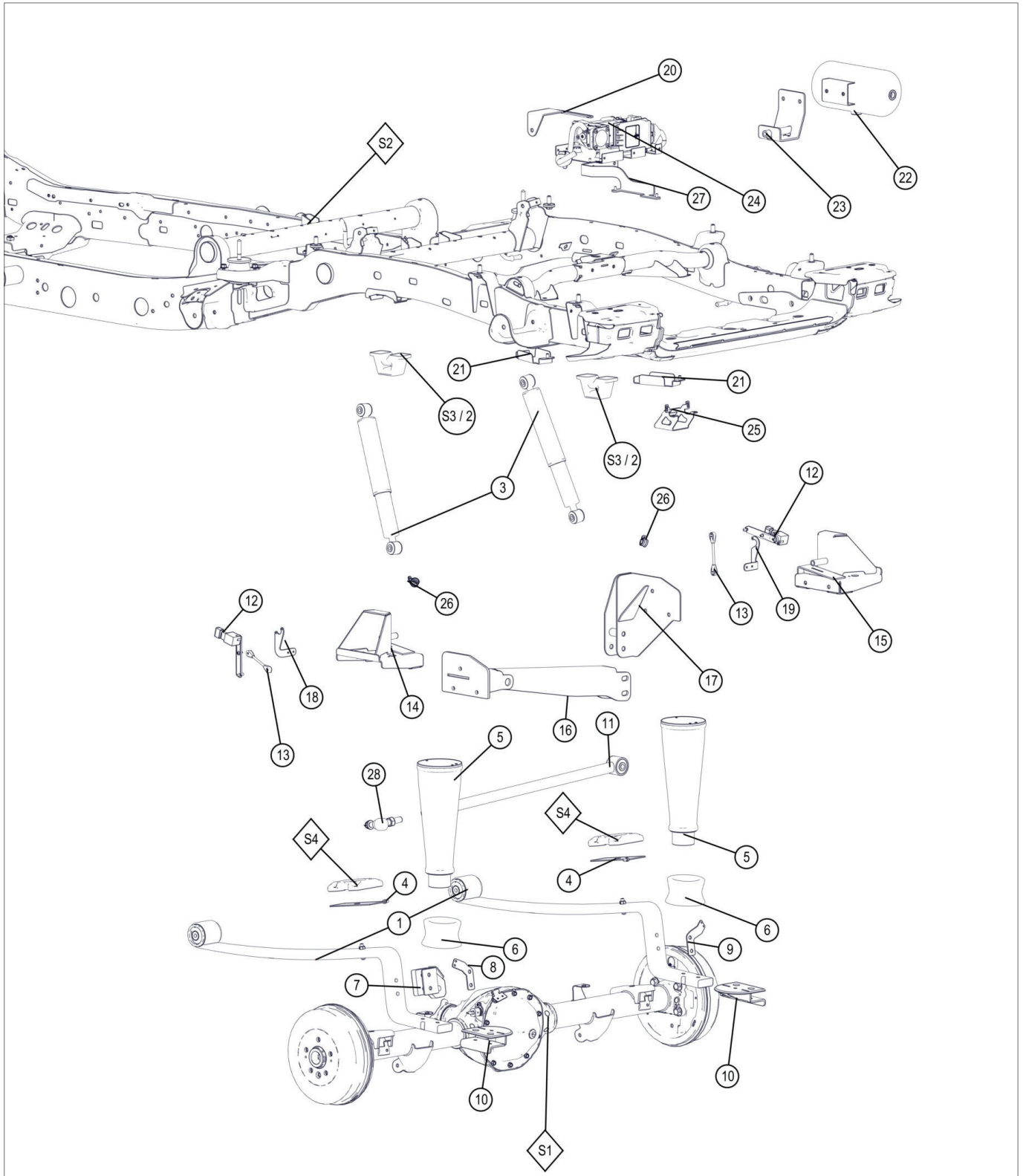
Amarok RWD 2010-current Generation II

735105091701

V 03

For kit numbers:

1050917210



Original parts from the vehicle

Item	Qty.	Description
S1	1	Rear axle
S2	1	Chassis

Item	Qty.	Description
S3	2	Bump stop
S4	4	Spring plate

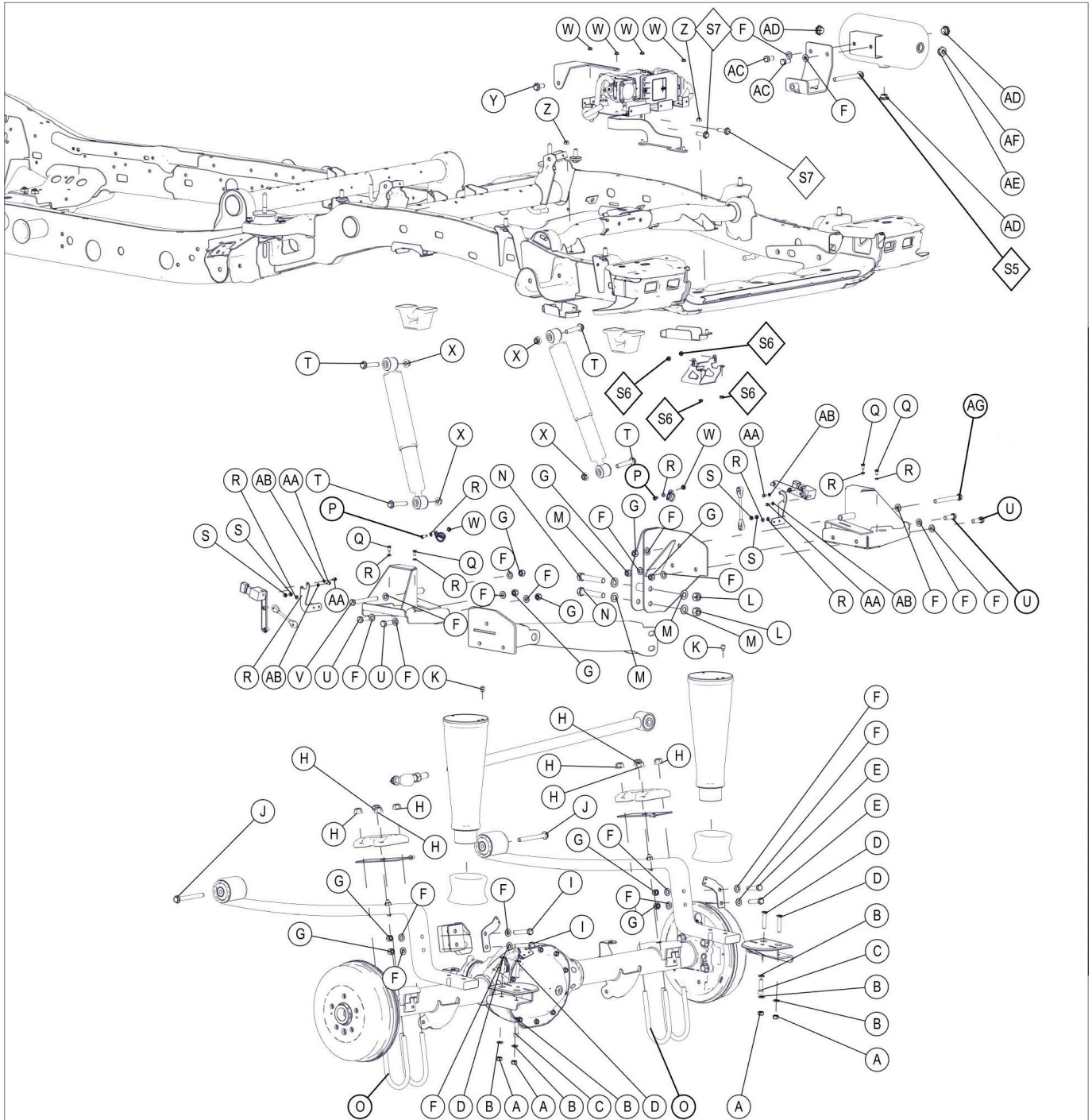
VOLKSWAGEN

Amarok RWD 2010-current Generation II



Item	Qty.	Description	Part number
1	2	Main spring	105 201 00 84 A
2	2	Bump stop 81mm (heavy duty 2+3 leaf spring only)	105 202 00 25 A
3	2	Shock absorber	105 210 00 69 C
4	2	Ball-joint bracket	105 209 00 53 A
5	2	Air spring	105 203 25 31 A
6	2	Piston	105 203 01 73
7	1	Panhard rod bracket	105 206 01 03
8	1	Mounting strip	105 235 01 51
9	1	Mounting strip	105 235 01 50
10	2	Lower Air spring support	105 205 01 11
11	1	Panhard rod	105 206 00 80
12	2	Height sensor	105 209 01 99
13	2	Height sensor rod 125mm	105 209 50 34
14	1	Upper Bellow support L	105 204 02 45
15	1	Upper Bellow support R	105 204 02 46
16	1	Cross beam	105 204 02 43
17	1	Panhard support plate	105 204 02 42
18	1	Height sensor bracket L	105 209 02 06
19	1	Height sensor bracket R	105 209 02 07
20	1	Compressor box bracket 1	105 213 01 84
21	2	Spare wheel support bracket	105 235 01 95
22	1	Air tank 5L	215 648 00 06
23	1	Air tanks support bracket	300 030 10 75
24	1	Compressor box *	105 213 01 93
25	1	Spare wheel support bracket 2	105 235 01 96
26	2	Brake line support bracket	001 410 00 06
27	1	Compressor box bracket 2	105 213 11 82
28	1	Panhard rod ball-joint	105 206 14 16
	1	Wiring harness	105 220 11 97
	1	Supply cable	105 220 12 23

* For an exploded view of the compressor box, see chapter 'General - Universal compressor box 2'



Original parts from the vehicle

Item	Qty.	Description
S5	1	Flange bolt M12x120
S6	4	Flange lock nut M6
S7	2	Flangebolt M10x35

VOLKSWAGEN

Amarok RWD 2010-current Generation II



ADItem	Qty.	Description	Part number
A	4	Lock nut M10	001 101 00 01 CA
B	6	Washer M10	001 121 00 00 AA
C	2	Allen Screw M10x40 Tuflok	001 031 00 40 CA
D	4	Countersunk screw M10x55	001 051 00 55 AA
E	2	Bolt M12x50	001 011 20 50 AA
F	22	Washer M12	001 121 20 00 AA
G	8	Lock nut M12	001 101 20 01 CA
H	8	Flange lock nut M14x1.5 (OEM)	001 111 40 05 SP
I	2	Bolt M12x75	001 011 20 75 CA
J	2	Flange bolt M12x125x1.5 (OEM)	001 071 21 25 SP
K	2	Air coupling ø4x1/8"	002 000 00 14
L	2	Lock nut M16	001 101 60 01 CA
M	4	Washer M16	001 121 60 00 AA
N	2	Bolt M16x100	001 011 61 00 CA
O	4	U-bolts M14	105 202 25 66
P	2	Bolt M6x16	001 010 60 16 AA
Q	4	Bolt M6x12	001 010 60 12 AA
R	10	Washer M6	001 120 60 00 AA
S	4	Lock nut M6	001 100 60 01 AA
T	4	Flange bolt M12x75x1.5 (OEM)	001 071 20 75 SP
U	4	Bolt M12x35	001 011 20 35 CA
V	1	Bolt M12x110	001 011 21 10 CA
W	6	Flange lock nut M6	001 110 60 01 AB
X	4	Flange nut M12x1.5 (OEM)	001 111 20 04 SP
Y	1	Flange bolt M12x30x1.5	001 071 20 30 DA
Z	2	Flange nut M8	001 110 80 00 AA
AA	4	Bolt M5x10	001 010 50 10 AA
AB	4	Washer M5	001 120 50 00 A
AC	2	Bolt M12x25	001 011 20 25 CA
AD	3	Blank plug M22	215 656 00 16
AE	1	Plug M22x1/8"	002 050 00 06
AF	1	Air coupling ø6x1/8"	002 000 00 19
AG	1	Bolt M12x100	001 011 21 00 CA

